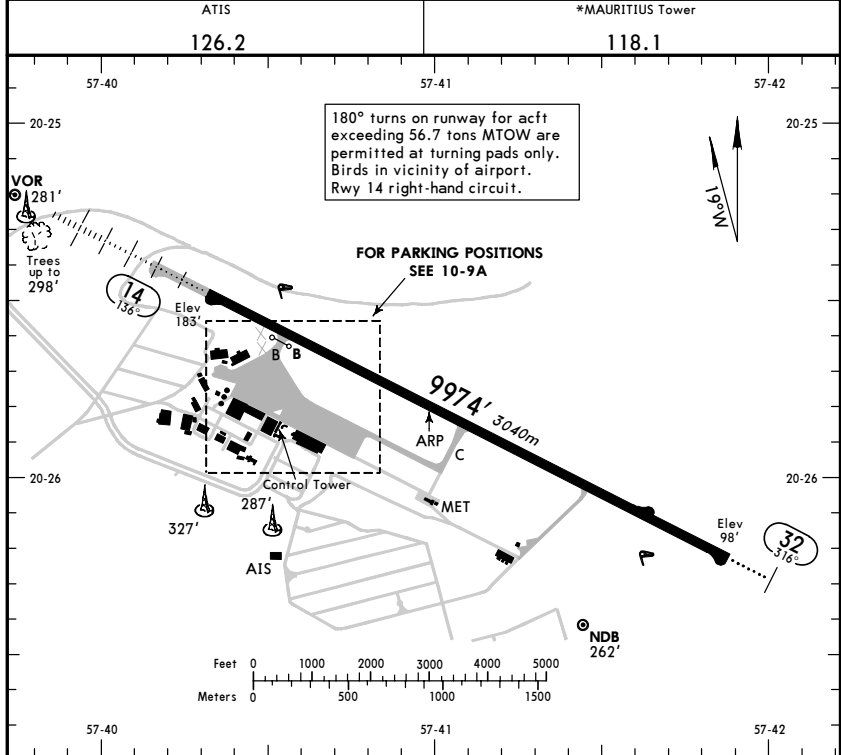


**FIMP/MRU** **JEPPESEN** **MAURITIUS, MAURITIUS**  
 Apt Elev **183'** 28 MAY 04 **(10-9)** **SIR SEEWOOSAGUR RAMGOOLAM INTL**  
 S20 25.8 E057 41.0



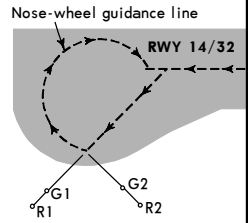
RWY	ADDITIONAL RUNWAY INFORMATION			
	USABLE LENGTHS	LANDING BEYOND	TAKE-OFF	WIDTH
14	HIRL (58m) HIALS PAPI-L (angle 3.5°)	RVR	8943' 2726m 11,056' 3370m ①	148' 45m
32	HIRL (58m) ALS PAPI (angle 3.0°)			

① Includes starter extension of 1083'/330m with special permission.

**SUPPLEMENTARY GUIDANCE FOR B-747 TYPE ACFT**

To carry out 180° turn: make initial turn from rwy centerline following nose-wheel guidance line, so that red & green pole mounted lights R1 & G1 are in line ahead. When red & green pole mounted lights R2 & G2 are in transit (at 90° to acft heading) with acft cockpit, commence turn and follow nose-wheel guidance line until aligned on rwy heading.

System is also suitable for B-707 & similar acft, but range indication is not applicable due to differences in cockpit height.

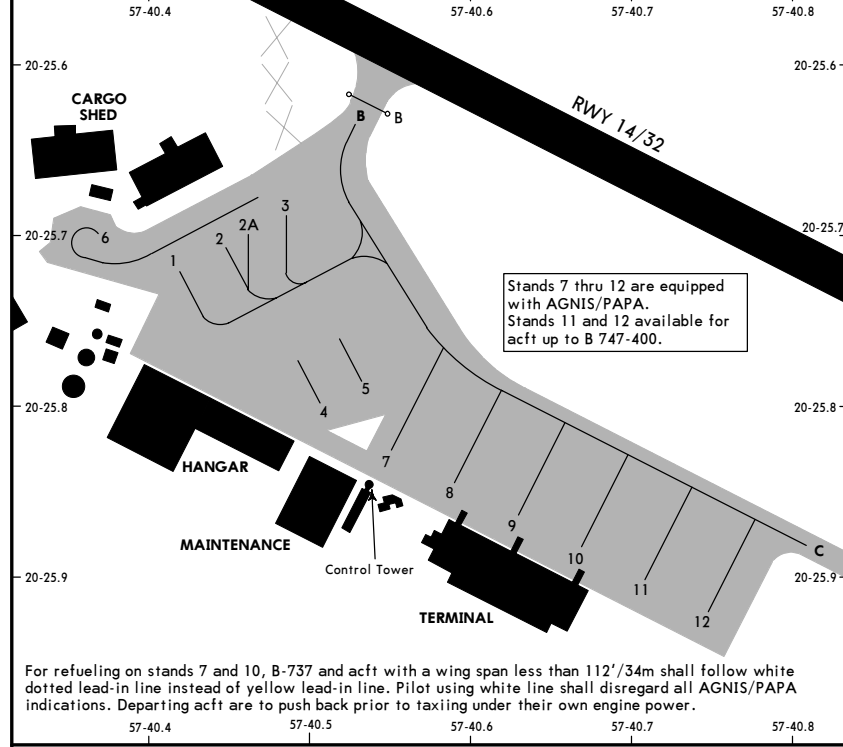


TAKE-OFF & DEPARTURE PROCEDURE	
AIR CARRIER (JAA)	
All Rwy's	
LVP must be in force RCLM (DAY only) or RL	RCLM (DAY only) or RL
A 250m	400m
B 250m	400m
C 300m	400m
D 300m	400m

**DEPARTURE PROCEDURE**

Aircraft intending to turn right after taking off on Rwy 14 should maintain Rwy heading to at least 1200 ft before commencing the right turn.

**FIMP/MRU** **JEPPESEN** **MAURITIUS, MAURITIUS**  
 28 MAY 04 **(10-9A)** **SIR SEEWOOSAGUR RAMGOOLAM INTL**  
 S20 25.8 E057 41.0



INS COORDINATES					
STAND No.	COORDINATES	ELEV	STAND No.	COORDINATES	ELEV
1	S20 25.7 E057 40.4	186	11	S20 25.9 E057 40.7	178
2	S20 25.7 E057 40.4	185	12	S20 25.9 E057 40.7	175
2A, 3	S20 25.7 E057 40.5	184			
4	S20 25.8 E057 40.5	182			
5	S20 25.8 E057 40.6				
6	S20 25.7 E057 40.4	186			
7	S20 25.8 E057 40.5	186			
8	S20 25.8 E057 40.6	184			
9	S20 25.9 E057 40.6	182			
10	S20 25.9 E057 40.7	179			

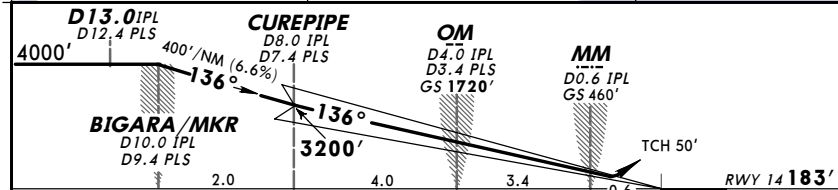
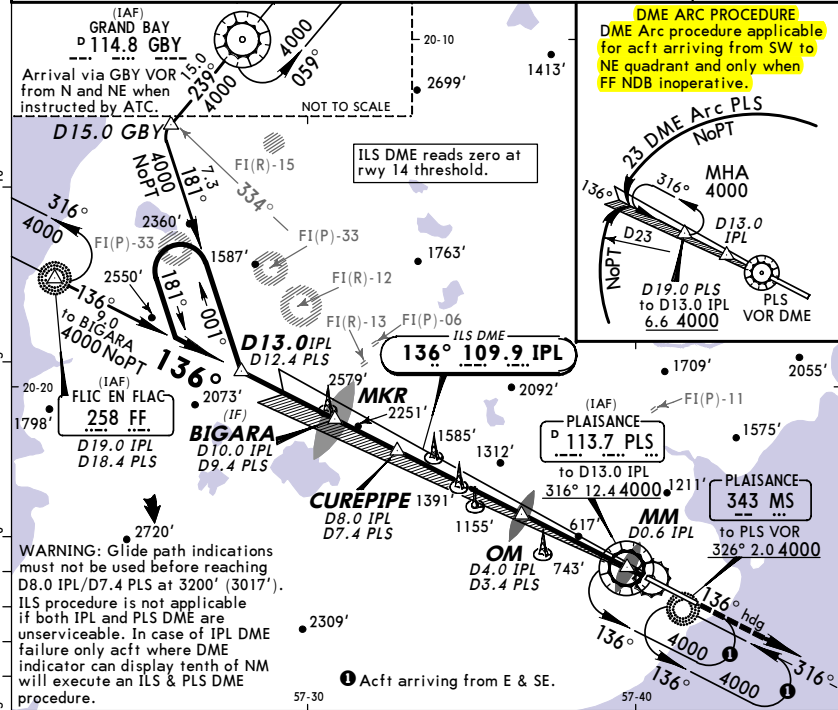
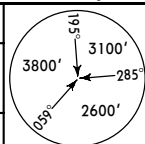
**FIMP/MRU**  
SIR SEEWOSAGUR  
RAMGOOLAM INTL

**JEPPESEN MAURITIUS, MAURITIUS**  
5 AUG 05 (11-1) **ILS DME Rwy 14**

ATIS 126.2		*MAURITIUS Approach 119.1		*MAURITIUS Approach/Tower 118.1	
LOC IPL 109.9	Final Apch Crs 136°	GS OM 1720' (1537')	ILS DA(H) Refer to Minimums	Apt Elev 183'	RWY 183'

**MISSED APCH: Climb to 4000' on heading 136° and contact ATC.**

Alt Set: hPa Rwy Elev: 7 hPa Trans level: By ATC Trans alt: 4000'



Gnd speed-Kts	70	90	100	120	140	160
GS	3.50°	439	565	628	753	879

HIALS 4000' on 136° hdg

PAPI

STRAIGHT-IN LANDING RWY 14		LOC (GS out)	
DA(H) A: 426' (243') B: 436' (253')	C: 446' (263') D: 456' (273')		
FULL		ALS out	
A RVR 720m VIS 800m	1200m	For LOC (GS out) apch refer to chart 11-2	
B			
C			
D			

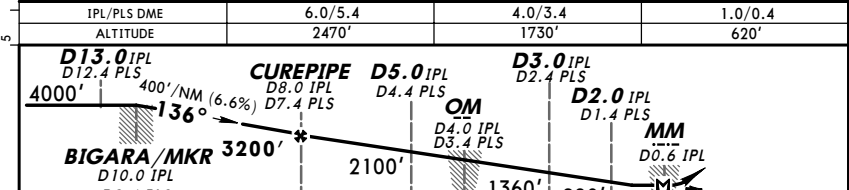
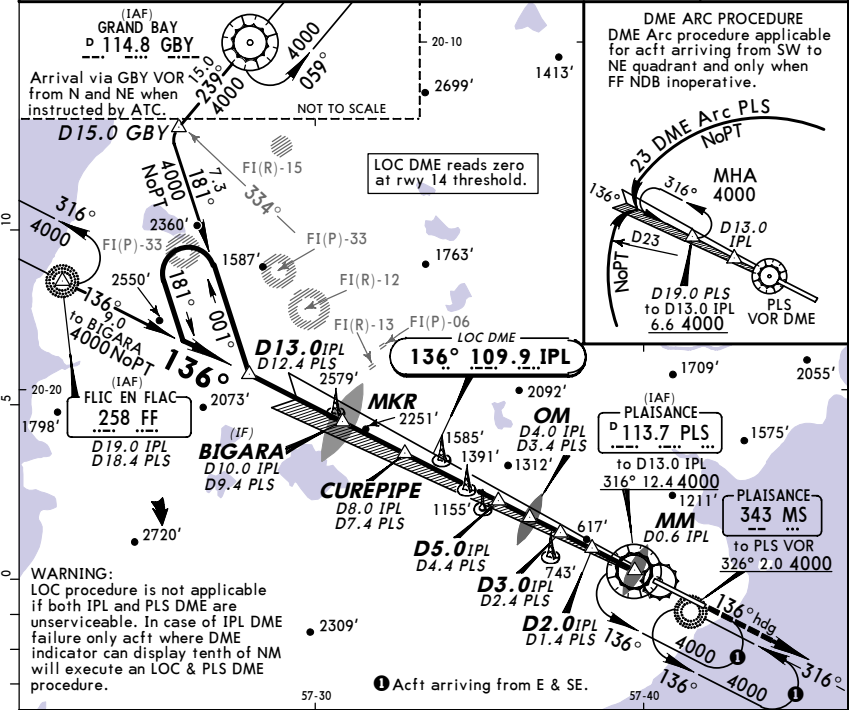
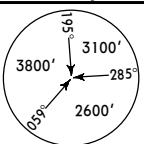
**FIMP/MRU**  
SIR SEEWOSAGUR  
RAMGOOLAM INTL

**JEPPESEN MAURITIUS, MAURITIUS**  
5 AUG 05 (11-2) **LOC DME Rwy 14**

ATIS 126.2		*MAURITIUS Approach 119.1		*MAURITIUS Approach/Tower 118.1	
LOC IPL 109.9	Final Apch Crs 136°	Minimum Alt CUREPIPE 3200' (3017')	MDA(H) 860' (677')	Apt Elev 183'	RWY 183'

**MISSED APCH: Climb to 4000' on heading 136° and contact ATC.**

Alt Set: hPa Rwy Elev: 7 hPa Trans level: By ATC Trans alt: 4000'



Gnd speed-Kts	70	90	100	120	140	160
GS	3.50°	432	556	618	741	865

HIALS 4000' on 136° hdg

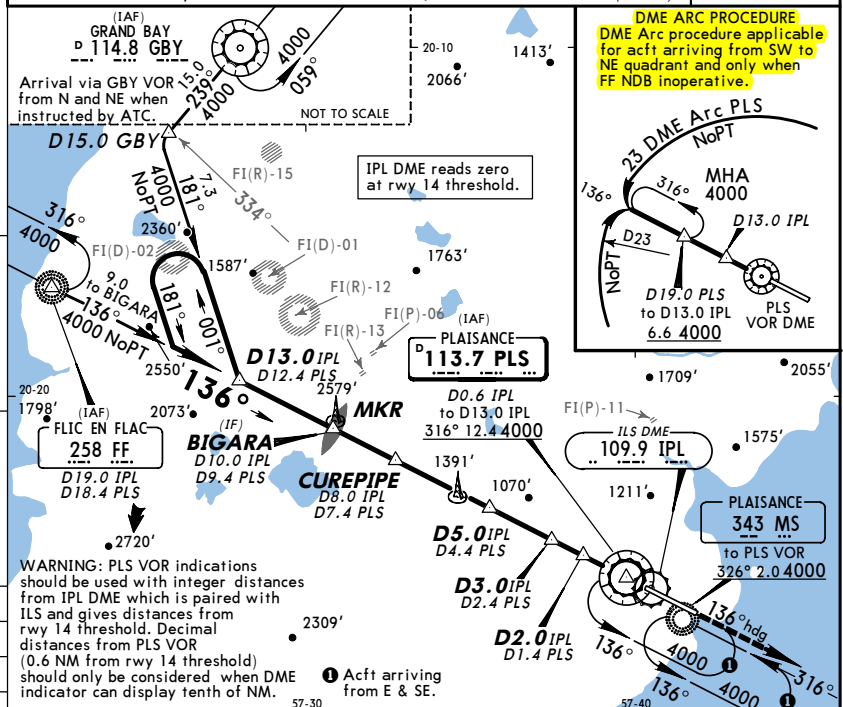
PAPI

STRAIGHT-IN LANDING RWY 14		ALS out	
MDA(H) 860' (677')			
A RVR 720m VIS 800m	1500m	3600m	
B			
C			
D			

**SIR SEEWOSAGUR RAMGOOLAM INTL** **JEPPESEN MAURITIUS, MAURITIUS**  
 4 JAN 02 (13-1) **VOR DME Rwy 14**

*ATIS 126.2		*MAURITIUS Approach 119.1		*MAURITIUS Approach/Tower 118.1	
VOR PLS 113.7	Final Apch Crs 136°	Minimum Alt 3400' (3217')	MDA(H) 860' (677')	Apt Elev 183'	RWY 183'

MISSED APCH: Climb to 4000' on heading 136° and contact ATC.  
 Alt Set: hPa Rwy Elev: 7 hPa Trans level: By ATC Trans alt: 4000'(3817')



IPL DME/PLS DME	6.0/5.4	4.0/3.4	1.0/0.4
ALTITUDE (HAT)	2610' (2427')	1820' (1637')	640' (457')

**D13.0 IPL** D12.4 PLS  
**CUREPIPE** D8.0 IPL D7.4 PLS  
**D5.0 IPL** D4.4 PLS  
**D3.0 IPL** D2.4 PLS  
**PLS VOR** D0.6 IPL  
 OCA(H) RWY 14 860'(677')

Gnd speed-Kts	70	90	100	120	140	160
Descent Gradient	6.5%	461	592	658	790	922
MAP at PLS VOR/D0.6 IPL						

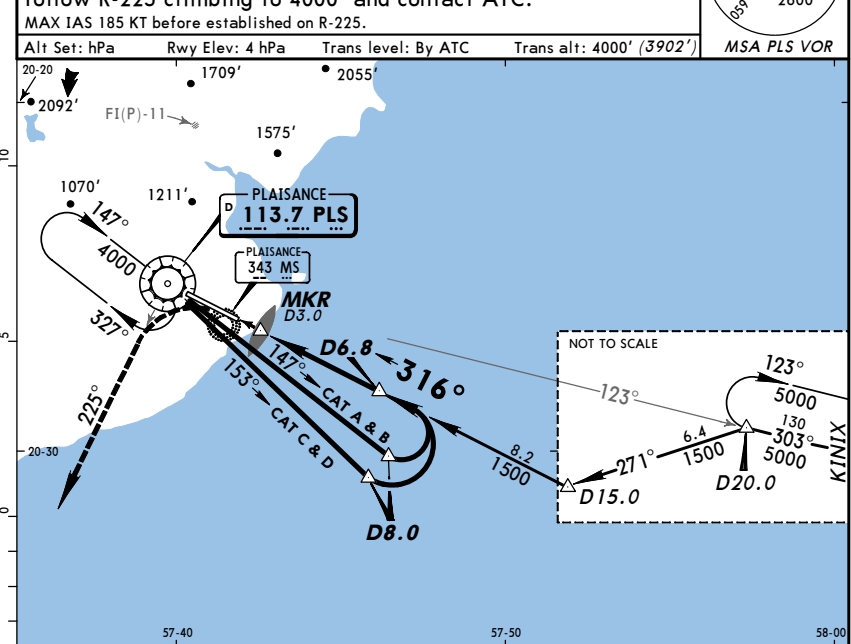
STRAIGHT-IN LANDING RWY 14  
 MDA(H) 860' (677')

A	RVR 720m VIS 800m	ALS out	RVR 1500m VIS 1600m
B	2400m		3200m
C	2800m		3600m

**FIMP SIR SEEWOSAGUR RAMGOOLAM INTL** **JEPPESEN MAURITIUS, MAURITIUS**  
 4 JAN 02 (13-2) **VOR DME Rwy 32**

*ATIS 126.2		*MAURITIUS Approach 119.1		*MAURITIUS Approach/Tower 118.1	
VOR PLS 113.7	Final Apch Crs 316°	Minimum Alt 1500' (1402')	MDA(H) Refer to Minimums	Apt Elev 183'	RWY 98'

MISSED APCH: Turn LEFT as soon as practicable to intercept and follow R-225 climbing to 4000' and contact ATC.  
 MAX IAS 185 KT before established on R-225.  
 Alt Set: hPa Rwy Elev: 4 hPa Trans level: By ATC Trans alt: 4000' (3902')



PLS DME	4.0	5.0	6.0
ALTITUDE (HAT)	700' (602')	1020' (922')	1340' (1242')

**VOR** 147° CAT A & B  
 153° CAT C & D  
**D8.0**  
 OCA(H) RWY 32  
 ABC: 510' (412')  
 D: 570' (472')

Gnd speed-Kts	70	90	100	120	140	160
Descent Gradient	5.2%	369	474	527	632	737
MAP at MKR/D3.0						

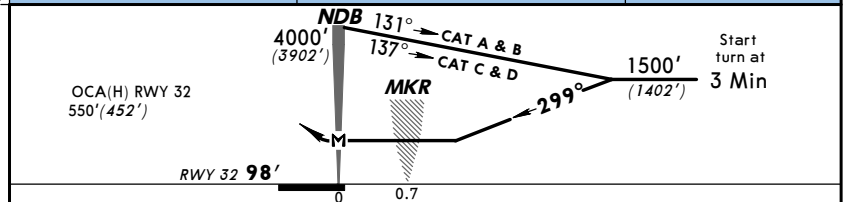
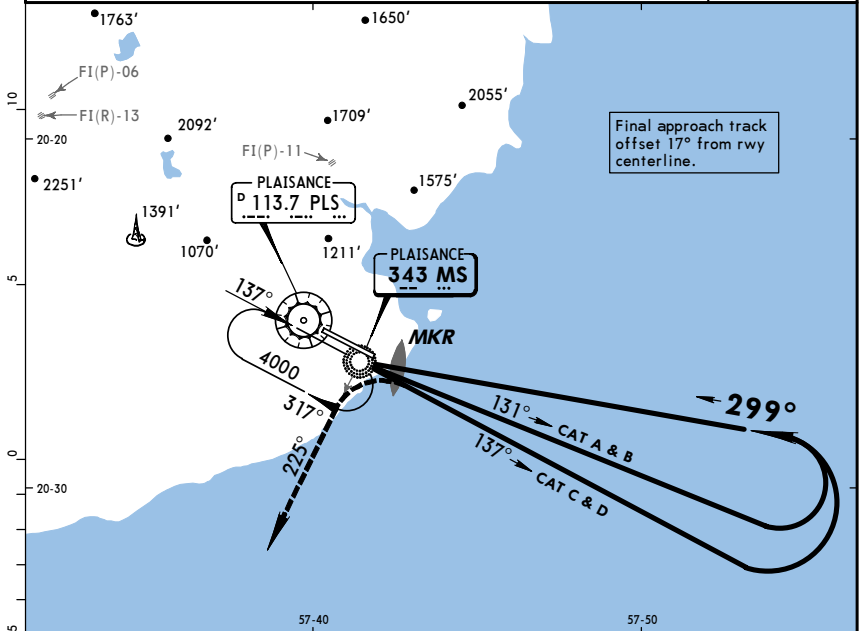
STRAIGHT-IN LANDING RWY 32  
 MDA(H) ABC: 510' (412')  
 D: 570' (472')

A		ALS out	Max Kts	MDA(H)	
B	1600m		100	870' (687')	1600m
C	2000m		135	920' (737')	1600m
D	2400m		180	1380' (1197')	4800m
			205	1510' (1327')	4800m

**FIMP**  
 SIR SEEWOSAGUR  
 RAMGOOLAM INTL

**JEPPESEN MAURITIUS, MAURITIUS**  
 4 JAN 02 (16-1)  
**NDB Rwy 32**

*ATIS <b>126.2</b>		*MAURITIUS Approach <b>119.1</b>		*MAURITIUS Approach/Tower <b>118.1</b>	
NDB MS <b>343</b>	Final Apch Crs <b>299°</b>	Minimum Alt No FAF	MDA(H) <b>550' (452')</b>	Apt Elev <b>183'</b>	RWY <b>98'</b>
MISSED APCH: Turn LEFT as soon as practicable to intercept and follow 225° from NDB climbing to 4000' and contact ATC. MAX IAS 185 KT before established on 225° from NDB.					
Alt Set: hPa    Rwy Elev: 4 hPa    Trans level: By ATC    Trans alt: 4000'(3902')					



MAP at NDB	ALS	Refer to Missed Apch above
	PAPI : PAPI	
	...	

PANS OPS 3	STRAIGHT-IN LANDING RWY 32		CIRCLE-TO-LAND Prohibited Northeast of runway	
	MDA(H) 550' (452')	ALS out	Max Kts	MDA(H)
A			100	870' (687')
B	1600m		135	920' (737')
C	2000m		180	1380' (1197')
D	2400m		205	1510' (1327')